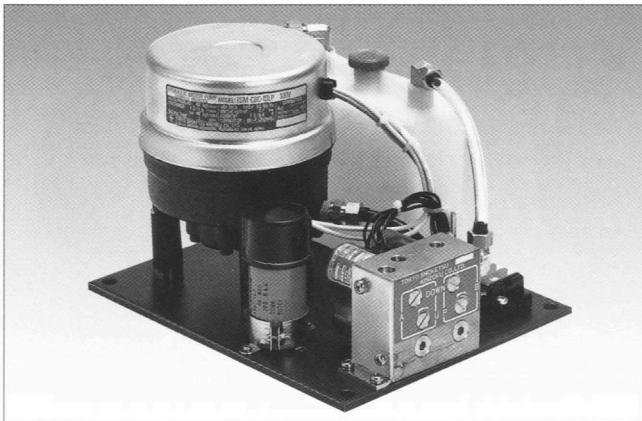


Hydraulic Unit

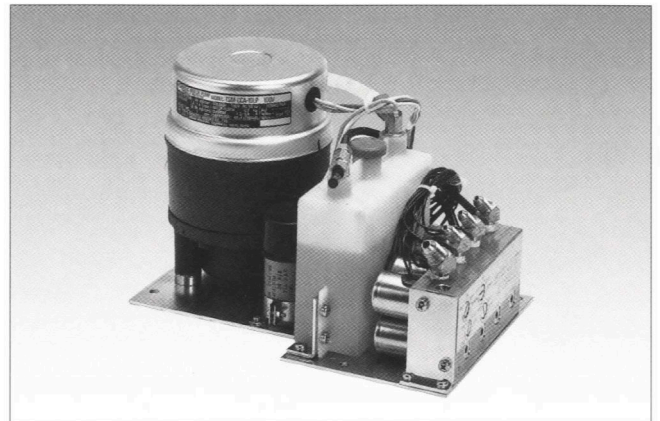
# HU Series (as a complete unit)

*The HU Series is a complete Hydraulic Unit That Comprises Reliable Components and Can Be Designed for Specific Needs.*

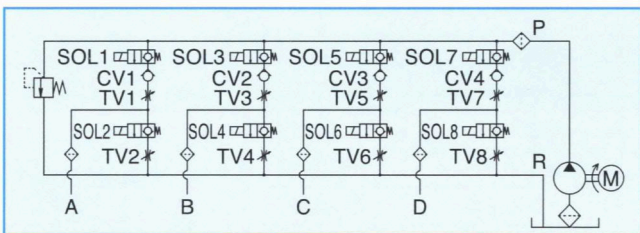
The HU series can be designed and manufactured to suit your specific requirements such as operating conditions, equipment and installation space.



The HU-33 is a general-purpose hydraulic unit that incorporates all the hydraulic components necessary for single-acting and double-acting cylinders in a small space. No electric wiring is required. The UH-33 is applicable to a variety of applications, including electric chairs, hospital beds, and diagnosis beds. The specific model of motor pump is attachable.



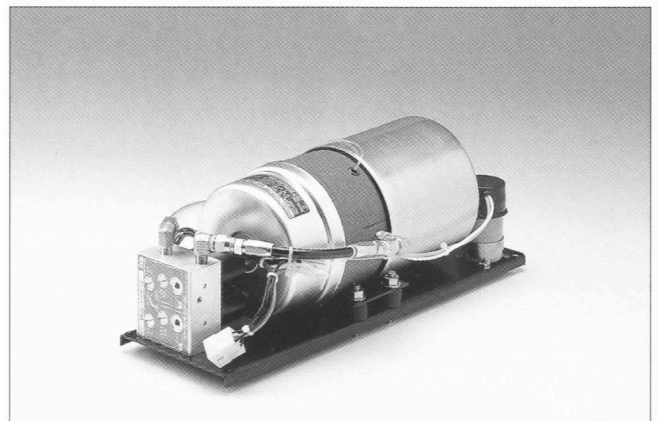
This hydraulic unit, comprising two single-acting cylinders and one double-acting cylinder, is adopted in a dental chair. It can be installed in a limited space.



Typical Use of the HU Series



Beauty Parlor Chair



This compact hydraulic unit, a combination of a motor pump and a reservoir, offers high performance equivalent to the HU-33. It gives the freedom of unit arrangement and unique styling.