

Compact Control Valve

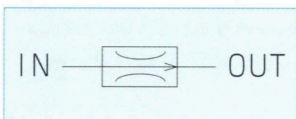
# FCV·RV·TSCV Series

Flow Control Valve

## FCV-01

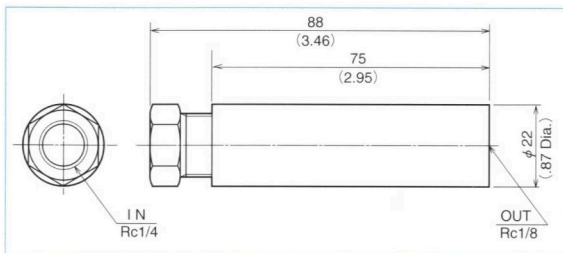
The FCV-01 is a compact in-line flow control valve with pressure compensation function. The pressure difference between inlet and outlet is kept at 1 MPa or more. For special oil flow (not listed at right), please contact us.

Hydraulic Circuit

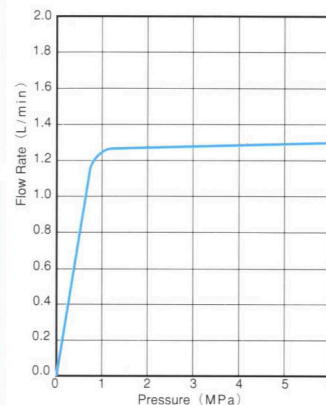


Specifications

Control Flow	L/min (gpm(US))	1.3±0.2 (0.34±0.05)
Pressure Range	MPa (psi)	1~8 (142~1138)
Minimum Pressure Difference	MPa (psi)	1 (142)



FCV-01 Flow Characteristic



Graphed curve is typical.

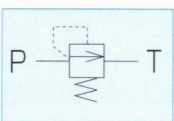
Relief Valve

## RV-01

The RV-01 is a direct-action relief valve that gives a wide pressure-adjusting range with high cost efficiency.

This relief valve is to be shipped after the specific pressure is factory-set. The specific pressure can be later adjusted with a straight-head screwdriver after removing a cap nut. (Counterclockwise turn will reduce pressure.) During adjusting, be sure to use a pressure gauge to meet the set pressure range. The setting outside this set pressure range may cause failure or trouble.

Hydraulic Circuit

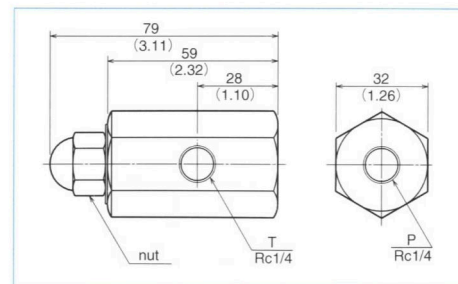


● Model Identification

e.g.) **RV - 01 - 55**  
 Relief Valve Setting Pressure e.g.) 55 : 5.5MPa(55kgf/cm<sup>2</sup>)  
 Model No.  
 Relief Valve

Specifications

Setting Pressure	MPa (psi)	0.7~1.5 (100~213)
		1.6~5 (228~711)
		5 ~7.5 (725~1067)
		7.6~10 (1081~1422)
Cracking Pressure	MPa (psi)	Setting Pressure - 0.5 (7)
Flow Range	L/min (gpm(US))	0.5 ~ 5 (0.13~1.32)

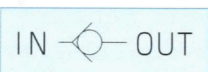


Check Valve

## TSCV-01

The TSCV-01 is a compact in-line no-leak check valve that is designed for one-way flow control.

Hydraulic Circuit



Specifications

Cracking Pressure	MPa (psi)	0.05 (7)
-------------------	-----------	----------

